

OCT 2011 / VOL 101 NO 10
US \$7 CAN \$9

LANDSCAPE ARCHITECTURE MAGAZINE

THE MAGAZINE OF THE AMERICAN
SOCIETY OF LANDSCAPE ARCHITECTS

HERE WE GROW AGAIN



THE STUDENTS

No problem too large

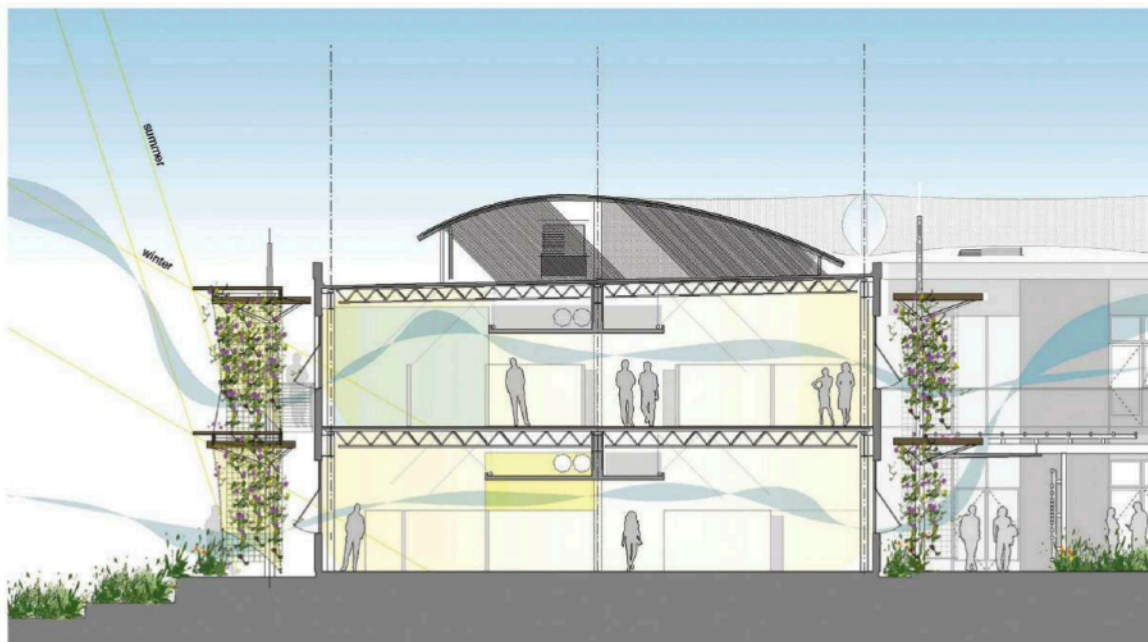
THE PROS

Cities win big

THE LANDMARK AWARD

What the San Diego River says today

**THE 2011
ASLA
AWARDS**



HONOR AWARD

CASA NUEVA: WORKING IN THE GARDEN, SANTA BARBARA, CALIFORNIA

Outdoor office spaces with computer charging stations—only in Santa Barbara? What these well-equipped work areas really acknowledge is that “living architecture makes a healthier atmosphere for working,” as the jury noted. To create a new Santa Barbara County office campus, Van Atta Associates situated a long narrow building at the site’s edges to maximize natural light and ventilation. The design also created a generous courtyard—the only outdoor space within

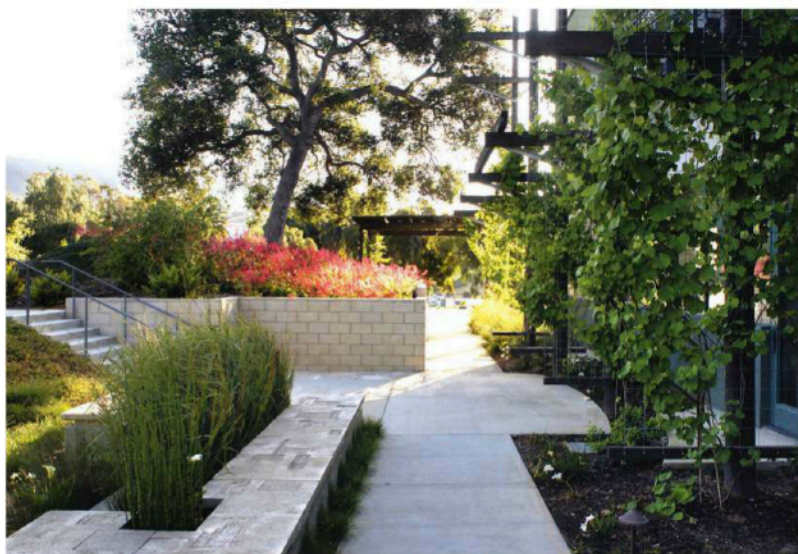
walking distance for the building’s 1,800 employees. Sheltered from wind and freeway noise, the courtyard’s terraces allow for working individually and collaborating.

Considerable passive climate modification includes a dramatic 330-foot trellis of shade fabric panels that shields south and west sunlight and gives the building a powerful green identity. Native grapevines cover trellises on the courtyard side of the building. Deciduous trees bring winter sun or summer shade to the seating areas.

A bioswale with native grasses runs through the courtyard and treats and filters stormwater before directing it into an artist-designed cistern. An aluminum runnel recirculates stored stormwater. The landscape relies on regionally native plants adapted to limited rainfall: Ground covers and slope plantings include coffeeberry and island snapdragon. Beds around the workstations hold colorful California poppies, island pink yarrow, and beach aster.

The jury said that, with very little budget, “this is quite beautiful.”

CLIENT COUNTY OF SANTA BARBARA
VAN ATTA ASSOCIATES INC., SANTA BARBARA,
CALIFORNIA



BILL DEWEY, Saxon Holt, Haley Adams, and Jessica Harlin