



# Two Pacific Rooms

Van Atta Associates, Inc.

California, USA

2007 Southern California Chapter Residential Design Honor Award, American Society of Landscape Architects

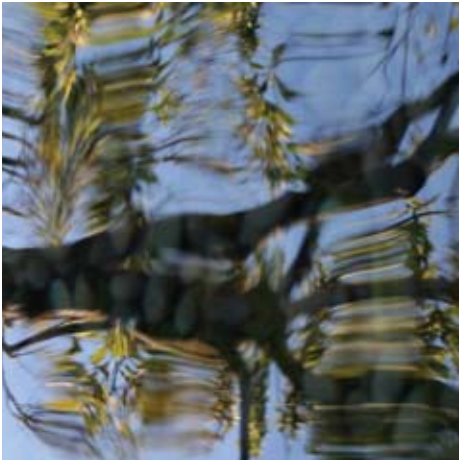
Our client wanted all of the right things- a landscape for this small piece of the Pacific coast to be elegantly simple, while environmentally sensitive. The dune garden overlooking the ocean is planted with regionally native plants, and a contemplative courtyard garden plays with light in a very private heart of the living quarters. The two gardens feel spacious while small, and work wonderfully with the environment by using resources wisely.

The experience of water in its many forms is at play throughout this garden. On one side of this contemporary beach house is the ocean, where a

seating area and a fire pit overlooking the beach amid natural dunes. Native plants—that can withstand the salt that blows in the wind—are adapted to stabilize the shifting sand.

On the other side of the home, a private courtyard harbors a fountain of basalt columns—sculpted by the homeowner—and a reflecting pool, which the house seems to float above. In this serene, almost formal space, plants are used architecturally. Black bamboo forms a leafy wall, tufts of black mondo grass grow in concentric circles and the gnarled trunks of myoporum trees are almost sculptures in themselves.

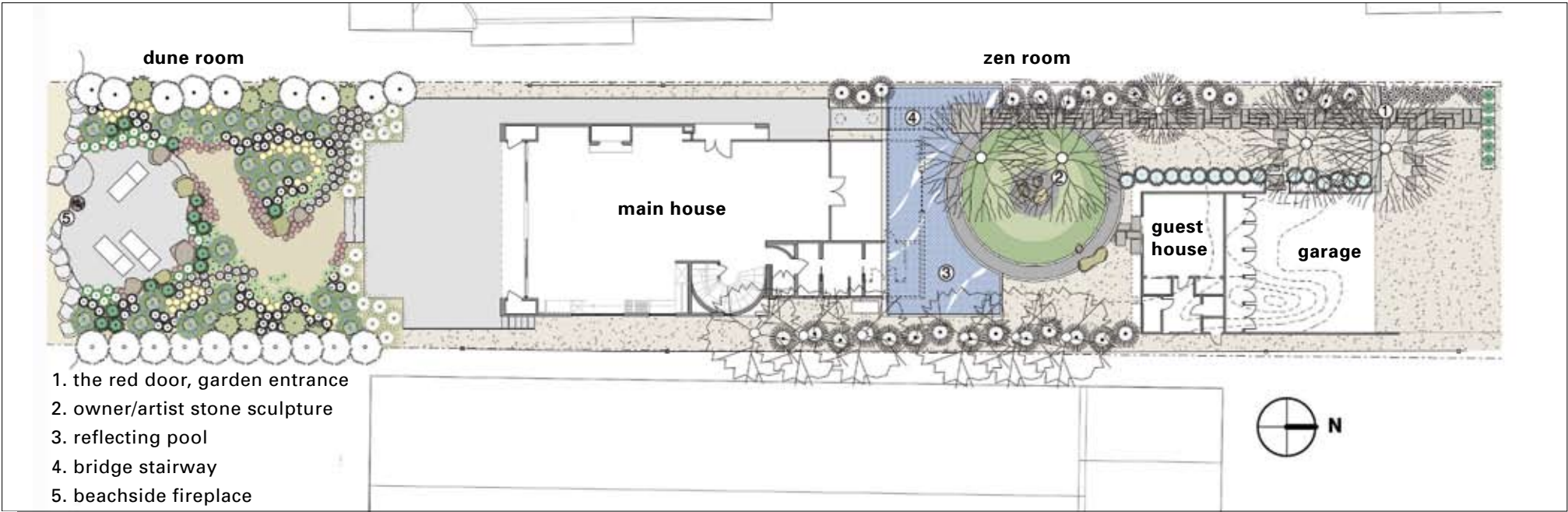
1 | Caption missing. 2 | Caption missing. 3 | Caption missing. 4 | Caption missing.







5



6

5 | Aerial view. 6 | Site plan. 7 | The street entry to the Zen Room featuring existing myoporum trunks. The red door hints at the garden beyond. 8 | Day and night views of the main house.



7



8









12



13



14



15



16



# Credits

24-31

**Van Atta Associates, Inc.**

Project Team: Susan Van Atta, ASLA, Principal;  
Guillermo Gonzalez; Michael Sanchez

Architect: Neumann Mendro Andrulaitis Architects,  
LLP

Landscape Contractor: Monteverde Landscape

General Contractor: Chismahoo Construction

**Photography**

Image  
1~4, 6, 8~9, 12~13, 15~16  
Susan Van Atta  
5 California Coastal Project  
7 Steve Gunther  
10~11, 14 Erhard Pfeiffer